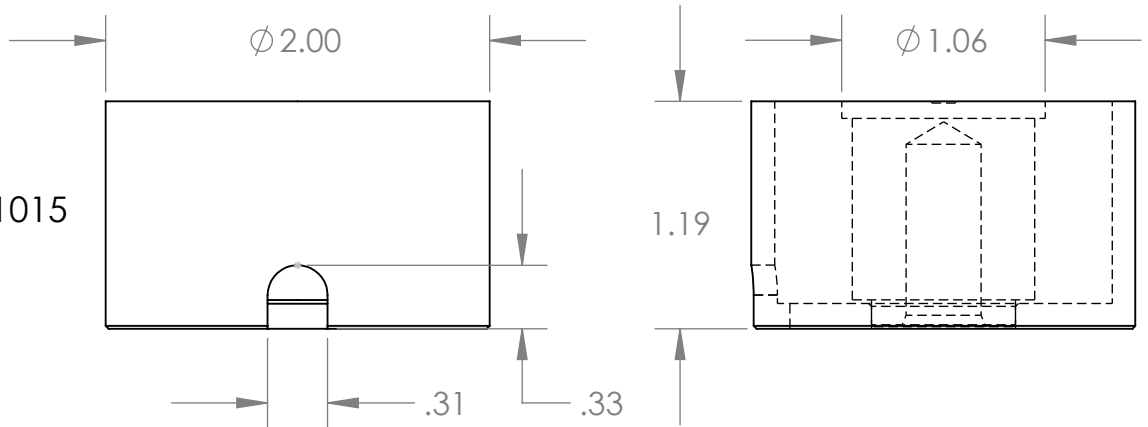


Isometric View



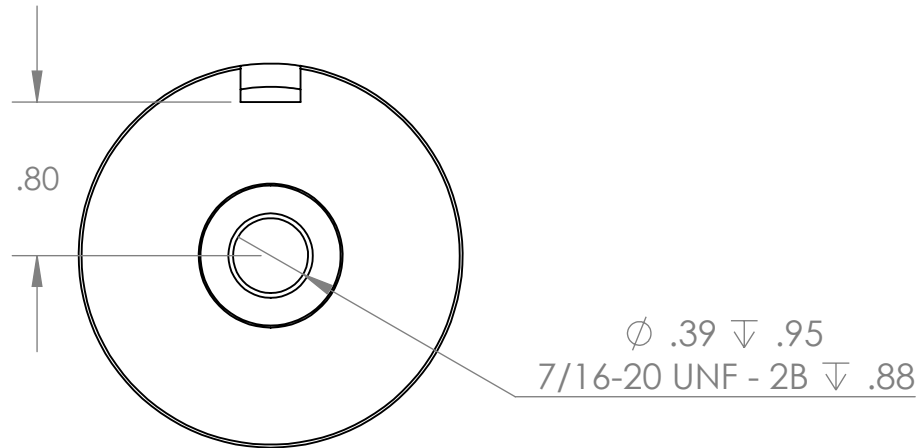
Electrical Specifications

- Voltage:** 24 VDC
- Duty Cycle:** Continuous
- Resistance:** 82 ohms \pm 10% (@ 20c)
- Amps @ rated Volts:** 0.29
- Watts @ rated Volts:** 7.02
- Holding:** 140 lbs (1/4" Thick 1215 CRS @ 20c)
- Operating Temp:** -40c to 60c (range)

Additional Components

- Screw:** N/A
- Spring:** N/A
- Spiral Pin:** N/A
- Potting:** N/A

Finish: Housing - Zinc or Electroless Nickel Plating (0.0002-0.0003")



PROPRIETARY AND CONFIDENTIAL
 THE INFORMATION CONTAINED IN THIS DRAWING IS THE SOLE PROPERTY OF APW COMPANY. ANY REPRODUCTION IN PART OR AS A WHOLE WITHOUT THE WRITTEN PERMISSION OF APW COMPANY IS STRICTLY PROHIBITED.

| | | | | | | | |
|-------------|------------|---|-----------|-----------|--------------------|---------------------|--------------|
| Client | Client P/N | UNLESS OTHERWISE SPECIFIED: DIMENSIONS ARE IN INCHES TOLERANCES: FRACTIONAL \pm .010 ANGULAR: MACH \pm BEND \pm TWO PLACE DECIMAL \pm .005 THREE PLACE DECIMAL \pm .003 | NAME | DATE | APW COMPANY | | |
| | | | DRAWN | D.P. | | 01.16.24 | |
| | | Break Sharp edges 0.002" unless otherwise noted | CHECKED | | TITLE: | | |
| | | | MATERIAL | ENG APPR. | | P/N: EM200-24-222-B | |
| | | FINISH | MFG APPR. | | SIZE | | |
| NEXT ASSY | USED ON | | COMMENTS: | Q.A. | | DWG. NO. | |
| APPLICATION | | DO NOT SCALE DRAWING | | | A | 7039 | REV |
| | | | | | SCALE: 1:1 | WEIGHT: | SHEET 1 OF 1 |