

Electrical Specifications

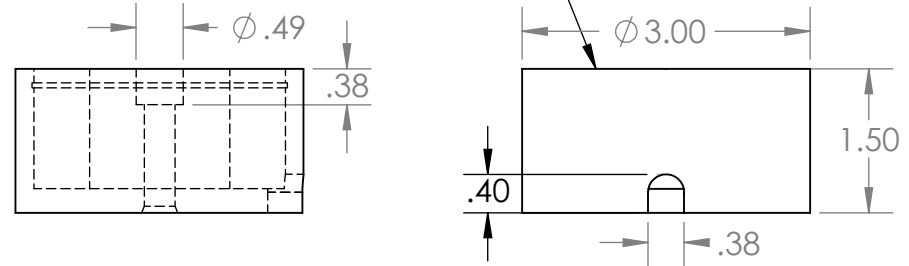
Voltage: 115 VAC
Duty Cycle: Continuous
Resistance: 652 ohms \pm 10% (@ 20c)
Amps @ rated Volts: 0.13
Watts @ rated Volts: 15.0
Holding: 300 lbs (1/4" Thick 1215 CRS @ 20c)
Operating Temp: -40c to 60c (range)

Additional Components

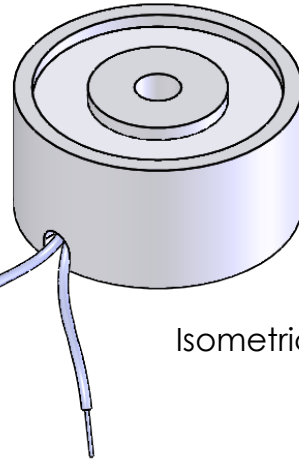
Screw: 5/16-18 x 1 1/2" Long (Socket Head Cap Screw) w/Nylok
Spring: N/A
Spiral Pin: N/A
Potting: N/A

Finish: Housing - Zinc or Electroless Nickel Plating
 (0.0002-0.0003")

Center Post Recessed
 (.003-.005)
 Quick Release

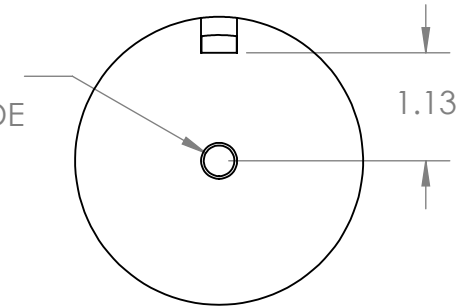


8" from coil to rectifier 11" after
 18 Ga. Type 1015 UL



Isometric View

ϕ .32 THRU ALL
 3/8-16 UNC - 2B ∇ 1.13
 \checkmark ϕ .38 X 45°, NEAR SIDE



PROPRIETARY AND CONFIDENTIAL
 THE INFORMATION CONTAINED IN THIS DRAWING IS THE SOLE PROPERTY OF APW COMPANY. ANY REPRODUCTION IN PART OR AS A WHOLE WITHOUT THE WRITTEN PERMISSION OF APW COMPANY IS PROHIBITED.

		UNLESS OTHERWISE SPECIFIED:	NAME	DATE
		DIMENSIONS ARE IN INCHES	DRAWN	K.H. 07.15.11
		TOLERANCES:	CHECKED	J.K. 07.15.11
		FRACTIONAL \pm .015	ENG APPR.	J.K. 07.15.11
		ANGULAR: MACH \pm 2 BEND \pm 2	MFG APPR.	J.K. 07.15.11
		TWO PLACE DECIMAL \pm .005	Q.A.	
		THREE PLACE DECIMAL \pm .003	COMMENTS:	
		INTERPRET GEOMETRIC TOLERANCING PER: ANSI		
		MATERIAL		
NEXT ASSY	USED ON	FINISH		
APPLICATION		DO NOT SCALE DRAWING		

APW COMPANY

TITLE:

P/N: EM300-115ac-122

SIZE	DWG. NO.	REV
A	6291	

SCALE: 1:2	WEIGHT:	SHEET 1 OF 1
------------	---------	--------------